

Chicago Park District Natural Areas RFQA: Ogden Park Nature Garden

		Nature Garden
species	common_name	2017
<b>native</b>		
<i>Aquilegia canadensis</i>	wild columbine	1
<i>Asclepias syriaca</i>	common milkweed	2
<i>Cephalanthus occidentalis</i>	buttonbush	2
<i>Corylus americana</i>	american hazelnut	1
<i>Echinacea purpurea</i>	purple coneflower	2
<i>Eryngium yuccifolium</i>	rattlesnake master	1
<i>Geum canadense</i>	white avens	1
<i>Hamamelis virginiana</i>	witch hazel	1
<i>Heuchera richardsonii</i>	prairie alum root	1
<i>Mertensia virginica</i>	virginia bluebells	1
<i>Monarda fistulosa</i>	wild bergamot	1
<i>Oligoneuron rigidum</i>	stiff goldenrod	2
<i>Ostrya virginiana</i>	hop hornbeam	1
<i>Parthenium integrifolium</i>	wild quinine	1
<i>Phytolacca americana</i>	pokeweed	1
<i>Potentilla norvegica</i>	rough cinquefoil	1
<i>Quercus macrocarpa</i>	bur oak	2
<i>Rhus aromatica</i>	fragrant sumac	2
<i>Silphium perfoliatum</i>	cup plant	1
<i>Silphium terebinthinaceum</i>	prairie dock	2
<i>Solidago altissima</i>	tall goldenrod	1
<i>Sporobolus heterolepis</i>	prairie dropseed	1
<i>Symphyotrichum laeve</i>	smooth blue aster	1
<i>Symphyotrichum shortii</i>	shorts aster	1
<i>Tradescantia ohioensis</i>	common spiderwort	3
<i>Verbesina alternifolia</i>	wingstem	1
<i>Vitis riparia</i>	riverbank grape	1

Note:

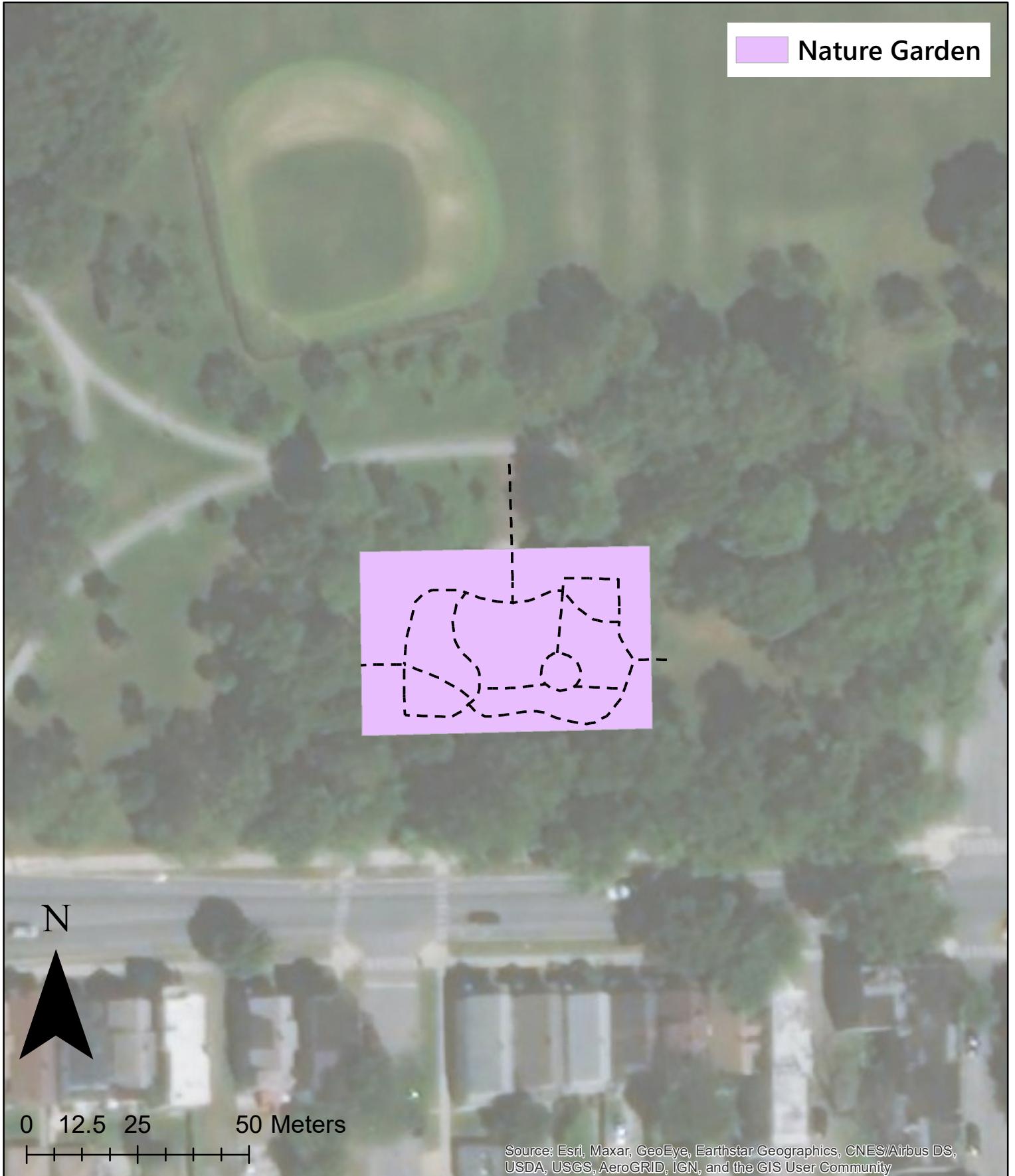
Cover classes of RFQA Species: 1 = 0-1%, 2 = 2-5%, 3 = 6-25%,  
4 = 26-50%, 5 = 51-75%, 6 = 76-95%, 7 = 96-100%

Note:

Starting in 2019, invasive species were included in the species list.

**NATURAL AREAS**

*Rapid Floristic Quality Assessment 2021*



 Nature Garden

N

0 12.5 25 50 Meters