

Chicago Park District Natural Areas RFQA: Legion SE ACOE

species	common_name	Prairie	Savanna	Wetland
		2020	2020	2020
invasive				
<i>Cichorium intybus</i>	chicory	1		
<i>Daucus carota</i>	queen anne's lace	1	1	1
<i>Dipsacus spp.</i>	teasel	1	1	
<i>Phragmites australis</i>	common reed			2
<i>Rhamnus cathartica</i>	common buckthorn	1	1	1
<i>Rosa multiflora</i>	multiflora rose		1	
<i>Typha spp.</i>	cattails			2
native				
<i>Acer negundo</i>	boxelder	1	1	1
<i>Asclepias syriaca</i>	common milkweed	1	1	
<i>Cornus sericea</i>	red sticks		1	
<i>Elymus canadensis</i>	canada wild rye	1	1	1
<i>Heliopsis helianthoides</i>	false sunflower	1	1	
<i>Monarda fistulosa</i>	wild bergamot	2	2	1
<i>Oenothera biennis</i>	common evening primrose	1	1	1
<i>Panicum virgatum</i>	switch grass	1	1	
<i>Pycnanthemum virginianum</i>	common mountain mint	2	2	
<i>Ratibida pinnata</i>	yellow coneflower	1	1	
<i>Rudbeckia hirta</i>	black-eyed susan	1	1	
<i>Solidago altissima</i>	tall goldenrod	2	2	2
<i>Sporobolus heterolepis</i>	prairie dropseed	1		
<i>Zizia aurea</i>	golden alexanders	1	1	

Note:

Cover classes of RFQA Species: 1 = 0-1%, 2 = 2-5%, 3 = 6-25%,
4 = 26-50%, 5 = 51-75%, 6 = 76-95%, 7 = 96-100%

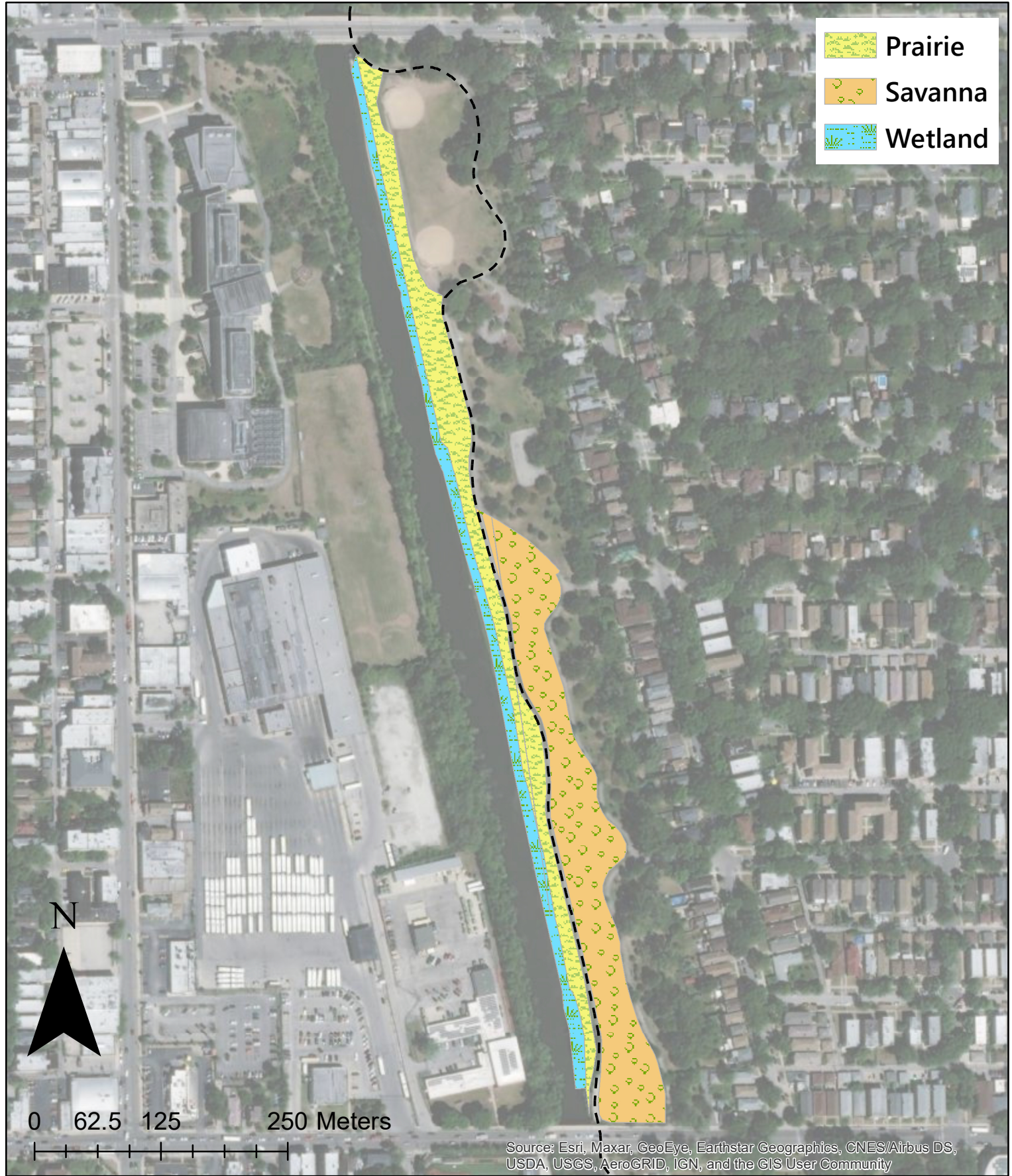
Note:

Starting in 2019, invasive species were included in the species list.

NATURAL AREAS

Rapid Floristic Quality Assessment 2021

Legion Park Natural Area (Southeast)



Source: Esri, Maxar, GeoEye, Earthstar Geographics, CNES/Airbus DS, USDA, USGS, AeroGRID, IGN, and the GIS User Community