

Chicago Park District Natural Areas RFQA: BWC - Burnham West South

species	common_name	Prairie	Savanna	Woodland	
		2016	2016	2016	2018
native					
<i>Acer negundo</i>	boxelder				1
<i>Acer rubrum</i>	red maple				1
<i>Acer saccharinum</i>	silver maple			1	2
<i>Acer saccharum</i>	sugar maple				2
<i>Ambrosia artemisiifolia</i>	common ragweed	1			1
<i>Ambrosia trifida</i>	giant ragweed			1	
<i>Anemone virginiana</i>	eastern tall anemone			2	1
<i>Aquilegia canadensis</i>	wild columbine			2	
<i>Asclepias syriaca</i>	common milkweed	1	2	1	1
<i>Asclepias tuberosa</i>	butterfly weed	2			
<i>Bouteloua curtipendula</i>	side-oats grama	2			
<i>Celtis occidentalis</i>	hackberry	1	3	2	2
<i>Circaea canadensis</i>	enchanters nightshade				1
<i>Coreopsis tripteris</i>	tall coreopsis	1			
<i>Dalea purpurea</i>	purple prairie clover	2			
<i>Dodecatheon meadia</i>	shooting star	1			
<i>Echinacea pallida</i>	pale purple coneflower	1			
<i>Echinacea purpurea</i>	purple coneflower			1	
<i>Elymus canadensis</i>	canada wild rye		5	3	2
<i>Eryngium yuccifolium</i>	rattlesnake master	2	1		
<i>Eupatorium altissimum</i>	tall boneset		2	2	
<i>Eupatorium serotinum</i>	late boneset	1	2	2	
<i>Eutrochium purpureum</i>	purple joe pye weed			2	2
<i>Fraxinus lanceolata</i>	green ash		1	2	
<i>Geum canadense</i>	white avens	1			
<i>Gleditsia triacanthos</i>	honey locust		2	2	
<i>Gymnocladus dioica</i>	kentucky coffee tree				1
<i>Hackelia virginiana</i>	stickseed			1	
<i>Hamamelis virginiana</i>	witch hazel			1	
<i>Heliopsis helianthoides</i>	false sunflower			1	
<i>Monarda fistulosa</i>	wild bergamot	2		1	
<i>Oligoneuron rigidum</i>	stiff goldenrod	2			
<i>Parthenium integrifolium</i>	wild quinine	2			
<i>Parthenocissus quinquefolia</i>	virginia creeper			1	2
<i>Phytolacca americana</i>	pokeweed			2	1
<i>Populus deltoides</i>	eastern cottonwood	1	3	3	
<i>Prunus serotina</i>	wild black cherry			1	
<i>Pycnanthemum virginianum</i>	common mountain mint	2			
<i>Quercus alba</i>	white oak			1	
<i>Quercus bicolor</i>	swamp white oak		1	1	
<i>Quercus imbricaria</i>	shingle oak		1	1	1
<i>Quercus macrocarpa</i>	bur oak		1	1	2
<i>Quercus rubra</i>	red oak			2	1

Chicago Park District Natural Areas RFQA: BWC - Burnham West South (*continued*)

species	common_name	Prairie	Savanna	Woodland	
		2016	2016	2016	2018
<i>Quercus velutina</i>	black oak				1
<i>Ratibida pinnata</i>	yellow coneflower		1	1	
<i>Rhus typhina</i>	staghorn sumac	1	3	1	1
<i>Rudbeckia hirta</i>	black-eyed susan	1	1	1	
<i>Sambucus canadensis</i>	elderberry			1	
<i>Schizachyrium scoparium</i>	little bluestem	2			
<i>Silphium laciniatum</i>	compass plant	1			
<i>Silphium perfoliatum</i>	cup plant		1	2	1
<i>Silphium terebinthinaceum</i>	prairie dock	1			
<i>Solidago altissima</i>	tall goldenrod	1	1	1	2
<i>Solidago nemoralis</i>	old-field goldenrod				1
<i>Sporobolus heterolepis</i>	prairie dropseed	1			
<i>Symphotrichum shortii</i>	shorts aster			4	1
<i>Tilia americana</i>	american linden			2	1
<i>Tradescantia ohiensis</i>	common spiderwort	1		1	1
<i>Ulmus americana</i>	american elm			1	1
<i>Verbena stricta</i>	hoary vervain		1		
<i>Verbena urticifolia</i>	hairy white vervain		1		
<i>Verbesina alternifolia</i>	wingstem			2	
<i>Veronicastrum virginicum</i>	culvers root	1			
<i>Vitis riparia</i>	riverbank grape		1	1	
<i>Zizia aurea</i>	golden alexanders	1		1	

Note:

Cover classes of RFQA Species: 1 = 0-1%, 2 = 2-5%, 3 = 6-25%,
4 = 26-50%, 5 = 51-75%, 6 = 76-95%, 7 = 96-100%

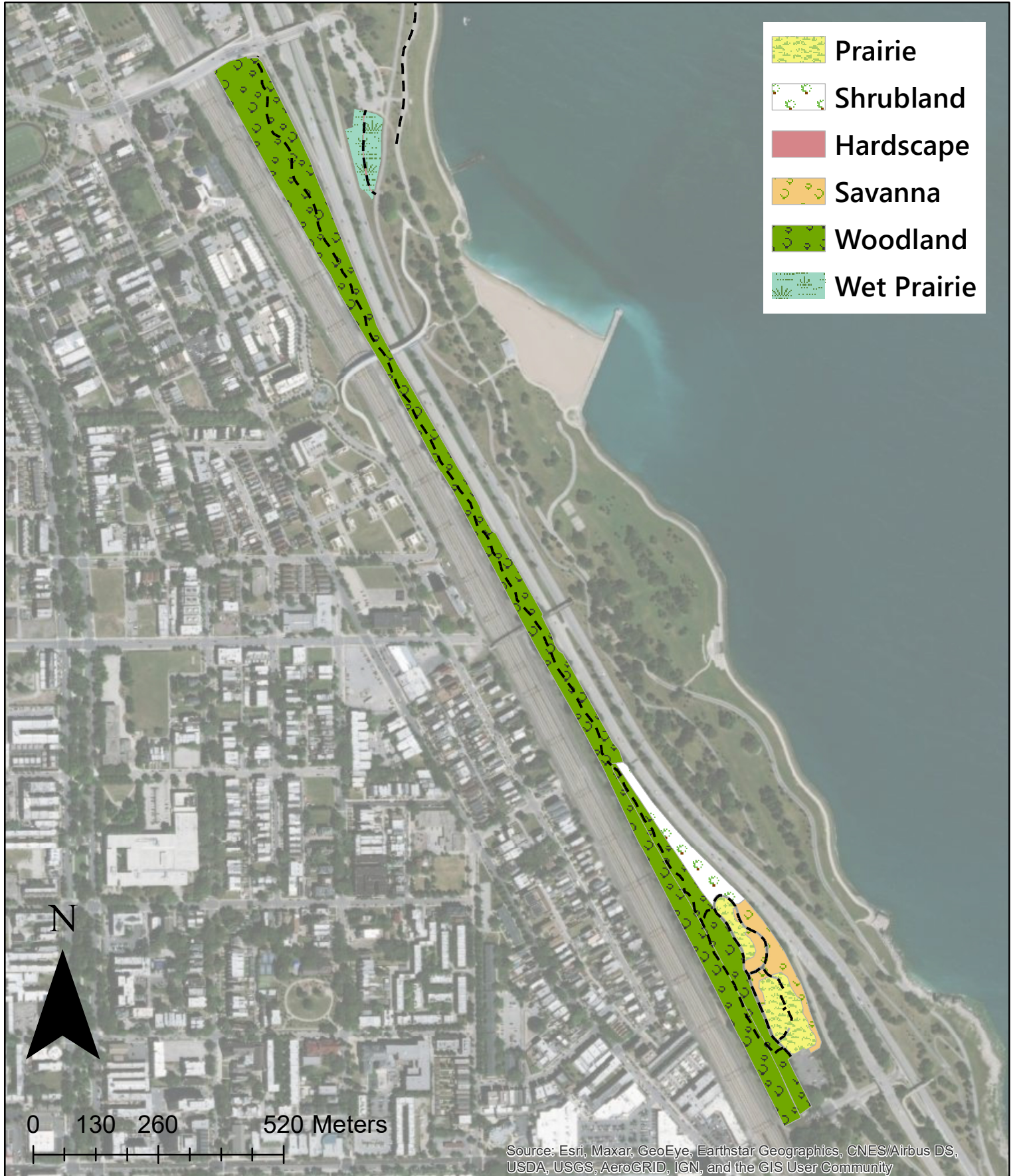
Note:

Starting in 2019, invasive species were included in the species list.

NATURAL AREAS

Rapid Floristic Quality Assessment 2021

Burnham Wildlife Corridor - Burnham West South



Source: Esri, Maxar, GeoEye, Earthstar Geographics, CNES/Airbus DS, USDA, USGS, AeroGRID, IGN, and the GIS User Community